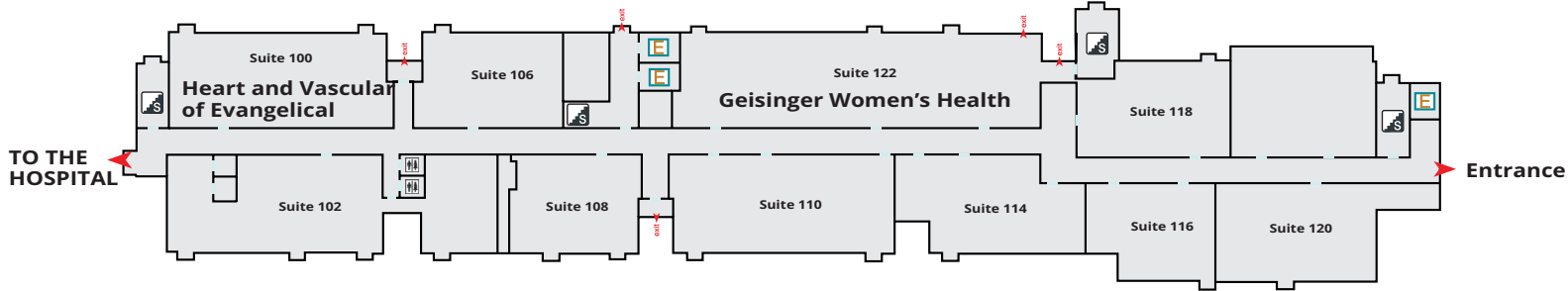
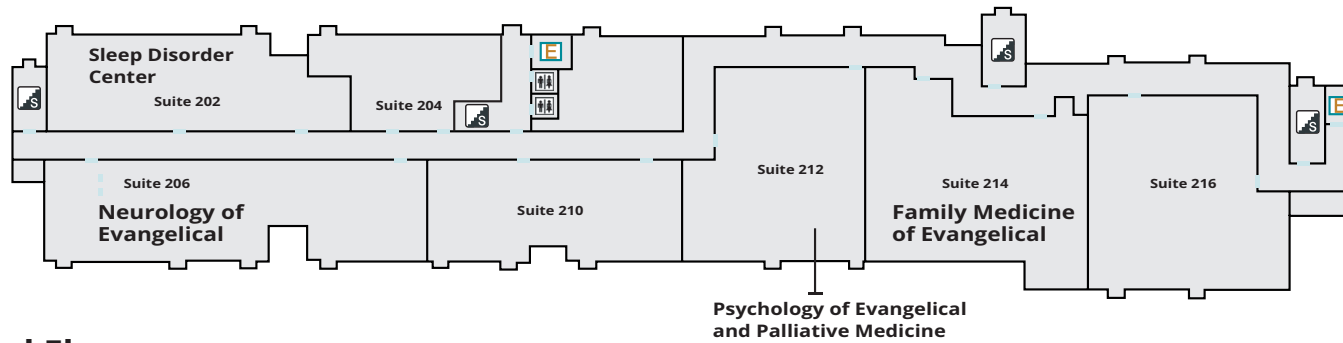


# Professional Office Building

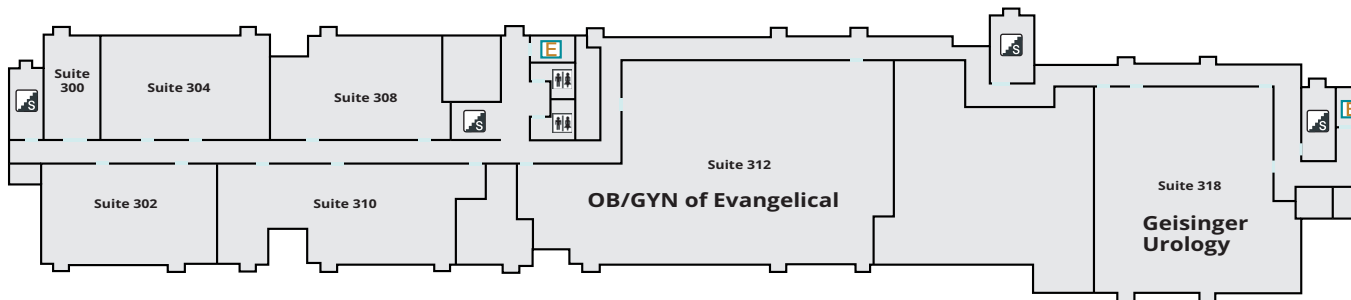
## First Floor



## Second Floor



## Third Floor



### ACCESS BY 1<sup>ST</sup> FLOOR





- 100..... Heart and Vascular of Evangelical
- 122..... Geisinger Women's Health

### ACCESS BY 2<sup>ND</sup> FLOOR

- 202..... Sleep Disorder Center
- 212..... Psychology of Evangelical and Palliative Medicine
- 206..... Neurology of Evangelical
- 214..... Family Medicine of Evangelical-Lewisburg

### ACCESS BY 3<sup>RD</sup> FLOOR

- 312..... OB/GYN of Evangelical
- 318..... Geisinger Urology

-  STAIRS
-  RESTROOMS
-  ELEVATORS
-  ENTRANCE